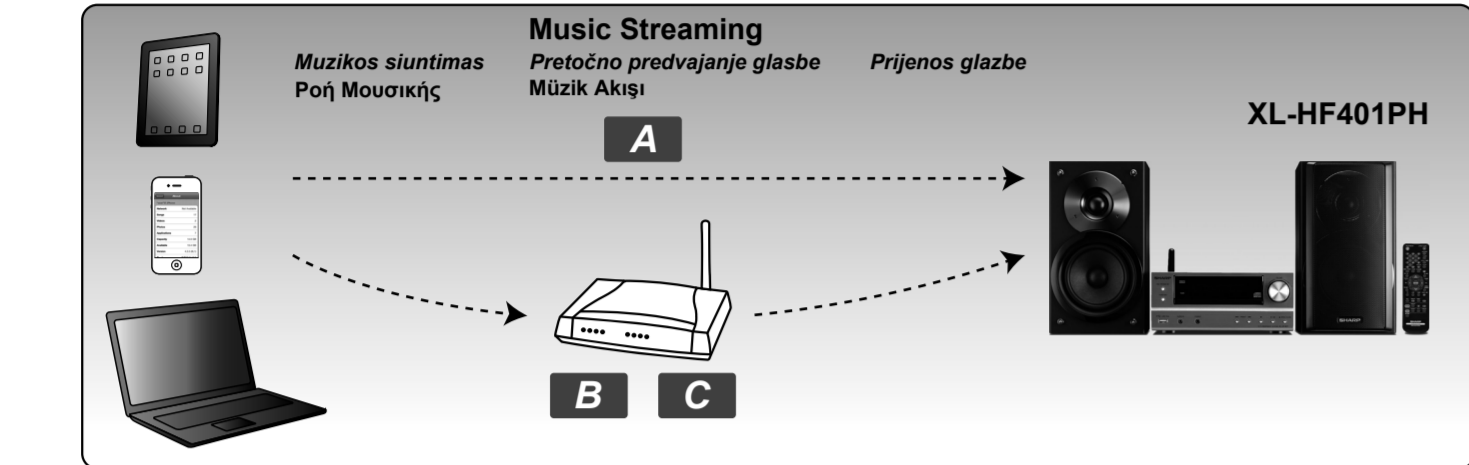




XL-HF401PH HI FI COMPONENT SYSTEM
HI FI KOMONENTNI SISTEM / ZYNGOTO SYZTUMA BD HI FI / HI FI KOMPLEMENTNI SISTEM / HI FI KOMPLEMENT SİSTEMİ / SUSTAV HI FI COMPONENTI

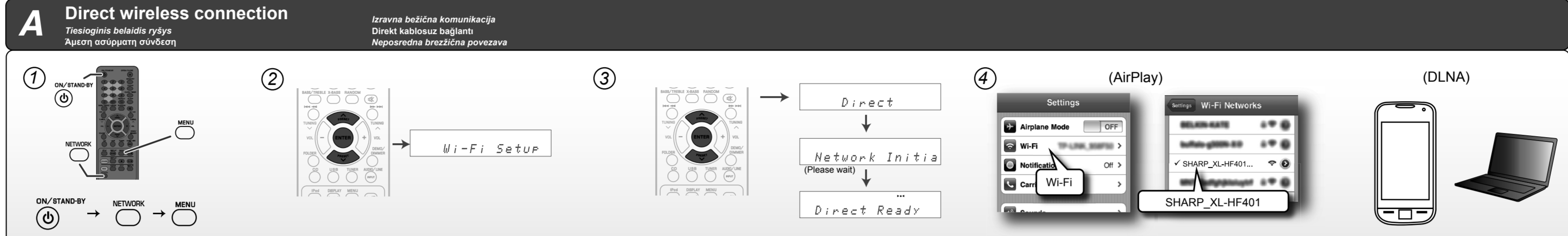
Wireless music streaming connection:
A Direct
B Via Wi-Fi router (with WPS)
C Via Wi-Fi router (without WPS)



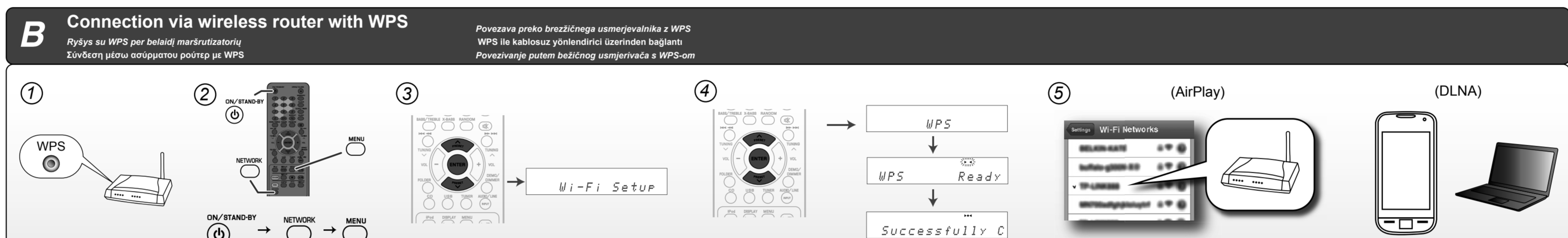
DLNA compatible device section with instructions for checking iOS version and DLNA compatibility on various devices.

Quick Guide for Network function (AirPlay / DLNA)

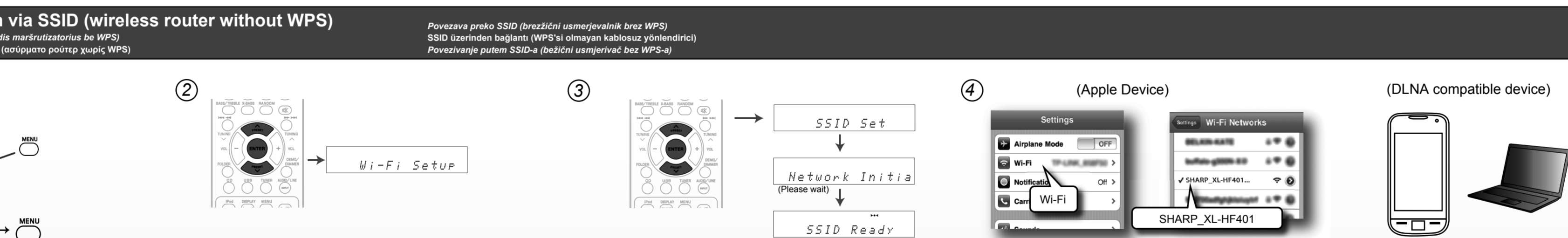
Tinklo funkcijai (Airplay / DLNA) skirtas greitis vadovas
Γρήγορος Οδηγός για Αερούπηια Δίκτυου (Airplay / DLNA)
Hitri vodič za funkcijo omrežja (Airplay/DLNA)
Ağ işlevi için Hızlı Kılavuz (Airplay / DLNA)
Brzi vodič za funkciju mreže (Airplay / DLNA)



EN Press these buttons accordingly:
LT Spauskite šiuos mygtukus atitinkamai:
GR Πατήστε τα κουμπιά σύμφωνα με το ακόλουθο:
SI Priložite sledeće gumba:
TR Bu düğmelere gereğince basın:
HR Priložite odgovarajuće gumba:

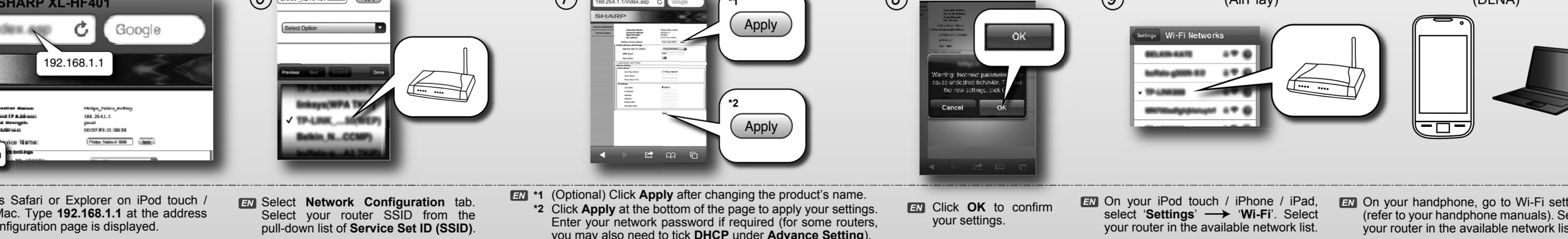
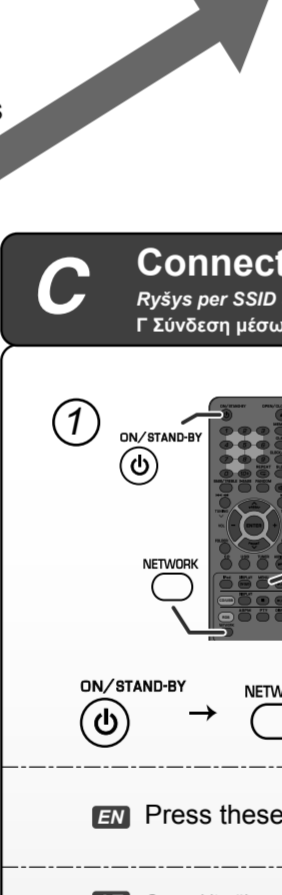


EN Press the WPS button on your router.
LT Spauskite šiuos mygtukus atitinkamai:
GR Πατήστε τα κουμπιά WPS στο роυτερ.
SI Priložite gumb WPS na vašem konektorju.
TR WPS düğmesini WPS bağlantı noktasına basınız.
HR Priložite gumb WPS na usmernaču.



EN Press these buttons accordingly:
LT Spauskite šiuos mygtukus atitinkamai:
GR Πατήστε τα κουμπιά σύμφωνα με το ακόλουθο:
SI Priložite sledeće gumba:
TR Bu düğmelere gereğince basın:
HR Priložite odgovarajuće gumba:

Check your home router section with questions like 'Does your router have a WPS button?' and 'Is your router compatible with DLNA?' and 'Notes'.



EN Open web browser as Safari or Explorer on iPod touch / iPhone / iPad or PC/Mac.
LT Atidarykite internetinį naršyklę su Safari arba Explorer naršyklėmis ant iPod touch / iPhone / iPad ar PC/Mac.
GR Άνοιξε τον ιστόπλογο ως Safari ή Explorer στο iPod touch / iPhone / iPad ή PC/Mac.
SI Otvorite spletni brskalnik, kar sta Safari ali Explorer na iPod touch / iPhone / iPad ali PC/Mac.
TR İnterneti tarayıcı olarak Safari veya Explorer web tarayıcısını açın.
HR Otvorite web preglednik kao što su Safari ili Explorer na uređaju iPod touch / iPhone / iPad ili PC/Mac.

Enjoy your AirPlay section with instructions for launching music and playing desired songs on various devices.

Enjoy your DLNA music streaming section with instructions for launching DLNA music streaming applications.

Notes section with various technical details, warnings, and legal notices regarding the product and its usage.